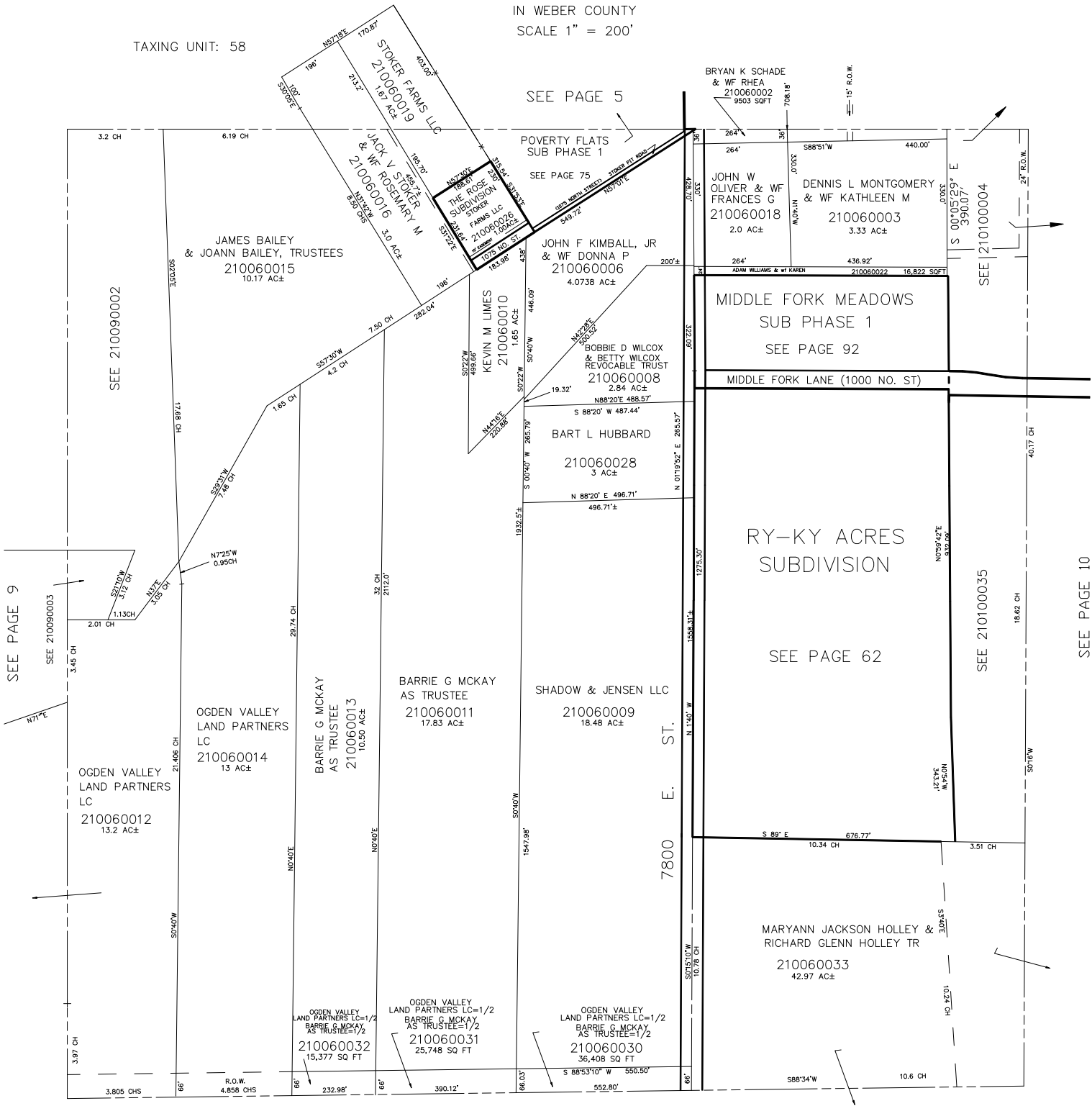


NE 1/4  
SECTION 7, T.6N., R.2E., S.L.B. & M.  
IN WEBER COUNTY  
SCALE 1" = 200'

TAXING UNIT: 58



SEE PAGE 9

SEE PAGE 5

SEE PAGE 75

SEE 210100004

MIDDLE FORK MEADOWS  
SUB PHASE 1  
SEE PAGE 92

MIDDLE FORK LANE (1000 NO. ST)

RY-KY ACRES  
SUBDIVISION  
SEE PAGE 62

SEE 210100035

SEE PAGE 10

SEE PAGE 7